

Photoshop actions have evolved into the most popular type of Photoshop add-ons for creating stunning static and animated effects, offering user-friendly functionality through Photoshop's familiar interface and commands.

Download and decompress:

When downloading PanosFX actions, you'll receive a zip file. Unzip it to create a folder containing subfolders with the action files for Photoshop and Photoshop Elements, as well as other files (documentation, etc.).

To organize effectively, consider creating a folder on your hard disk named '*PanosFX Photoshop add-ons*' and move the decompressed folder into it.

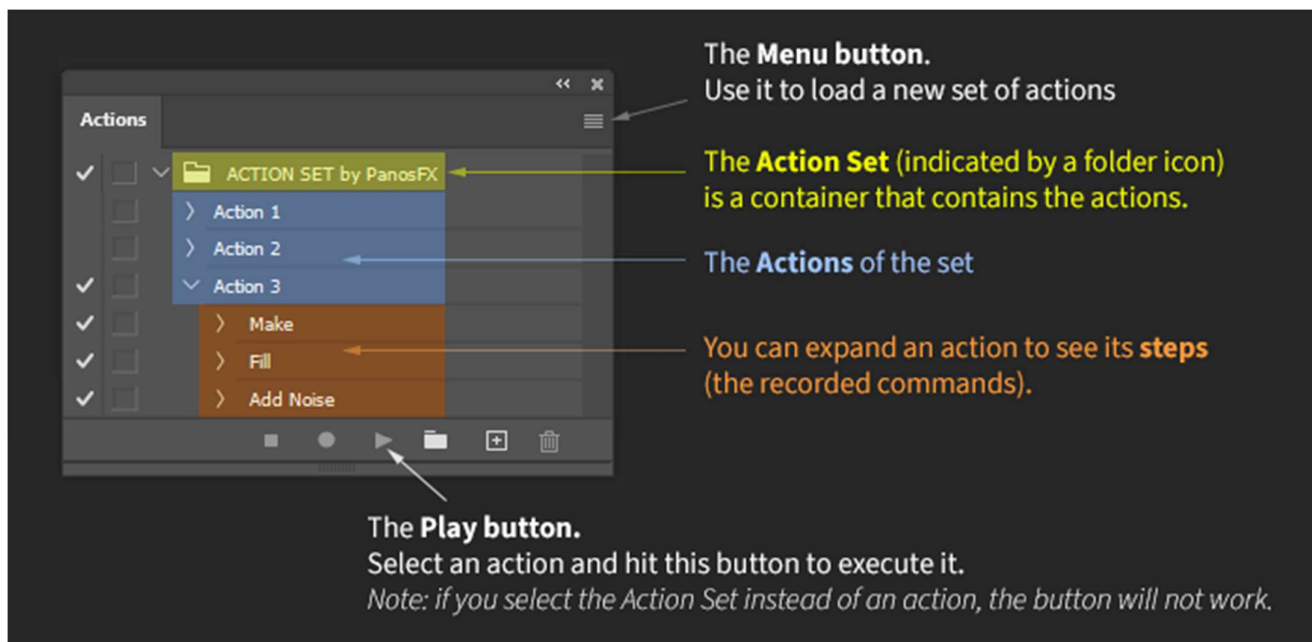
Avoid moving third party actions in Photoshop's Preset Folders:

Doing so may result in a cluttered Actions Panel. Instead, move the decompressed PanosFX product folder into the '*PanosFX Photoshop add-ons*' folder created earlier. Then, use the Actions Panel to load the actions in Photoshop when needed and unload them when finished, as described below.

Understanding the Actions Panel:

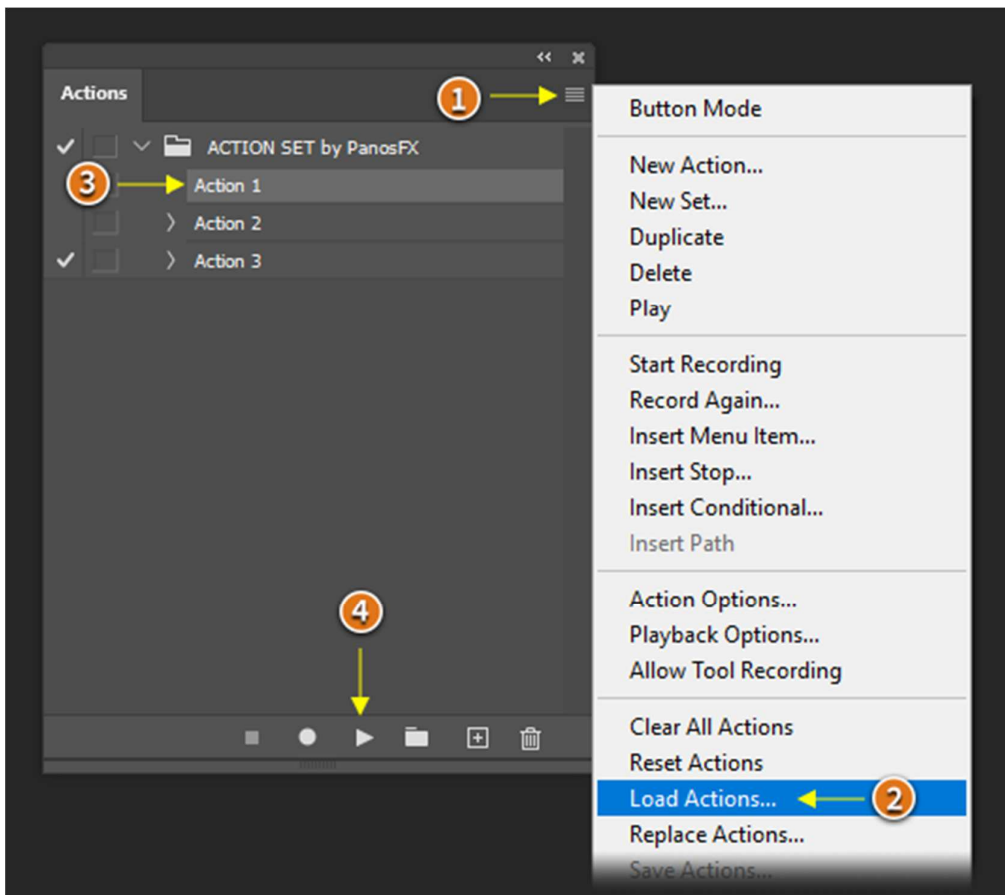
The Actions panel serves as the hub for loading, playing, creating, editing, and storing Photoshop actions. If it's not visible, go to Photoshop's main menu and select **Window > Actions**.

The Actions panel in Adobe Photoshop is illustrated below. It has a similar appearance in Photoshop Elements:



How to load and run Photoshop actions in 4 steps:

1. Click the **Menu button** in the Actions panel.
2. Select "**Load Actions**" from the fly-out menu. Navigate to the decompressed product folder. Open the subfolder that contains the action files for Photoshop or Photoshop Elements and load the file. The Action Set will be loaded in the Actions panel.
3. Click on an action to **select** it.
4. Hit the **Play button** to execute it.



How to unload Photoshop actions:

To remove an Action set from the Actions panel when you no longer need it, simply click on the set and then click the **trash** can icon at the bottom of the panel. Don't worry: this **won't delete** the action file from your hard disk. It will merely unload the Action set (and its actions) from Photoshop. You can load back the actions at any time.

Need help? Send an email to info@panosfx.com