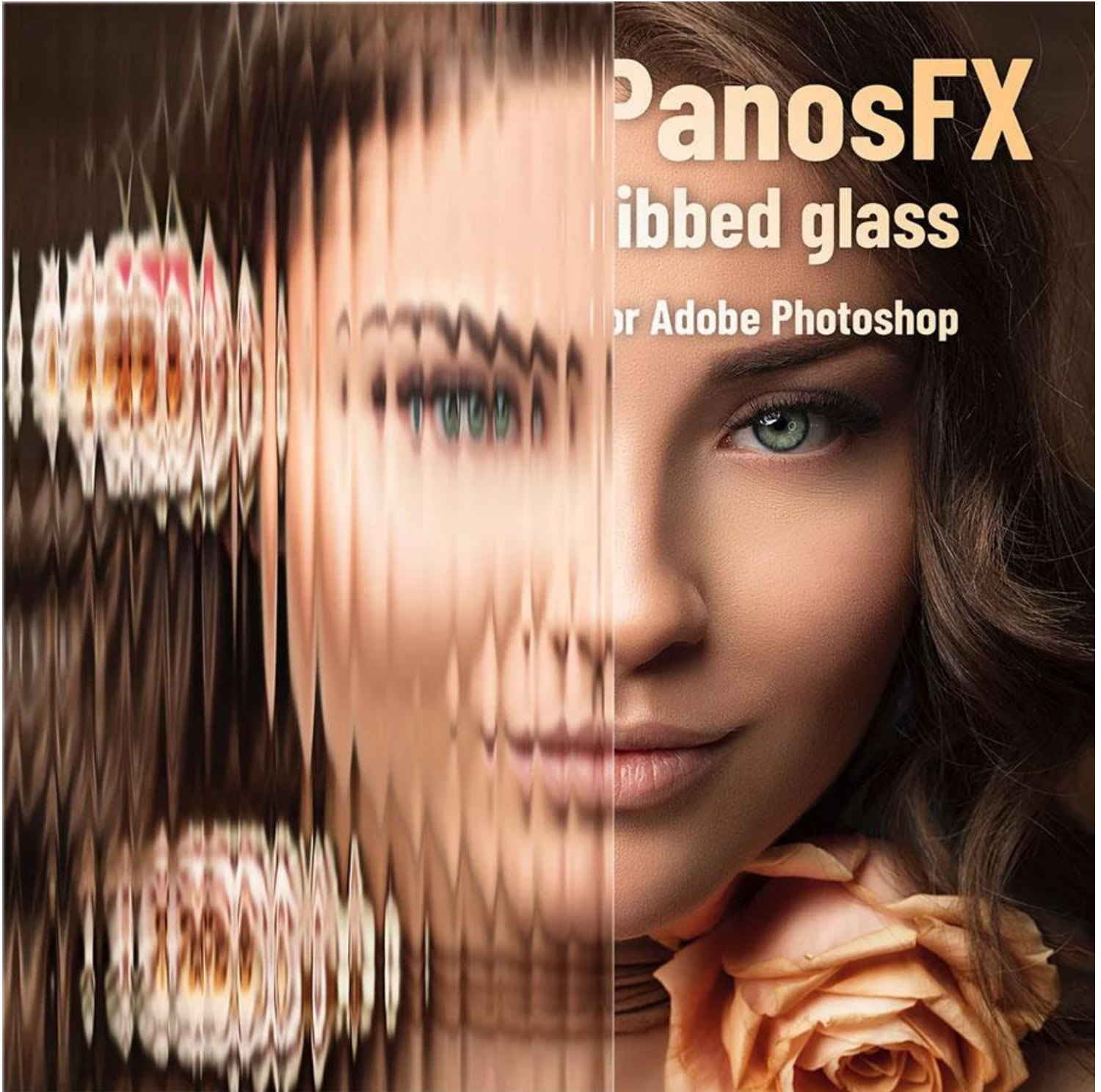


RIBBED GLASS

Actions for Adobe Photoshop and Photoshop Elements



User Guide

CONTENTS

1. THE BASICS.....	1
1.1. About the effects.....	1
1.2. How the actions are organized.....	1
1.3. Removing an older version (or a trial one).....	2
1.4. Installing the actions in Photoshop.....	2
1.5. Installing the actions in Photoshop Elements.....	2
2. THE ACTIONS.....	3
2.1. Using the 5 core actions.....	3
2.2. The ‘Rectangular opening’ and ‘Circular opening’ actions.....	7
2.2.1. <i>The ‘Rectangular opening’ action</i>	7
2.2.1. <i>The ‘Circular opening’ action</i>	9
2.3. The ‘Shinier ridges’ and ‘Colored glass’ actions.....	12
2.3.1. <i>The ‘Shinier ridges’ action</i>	12
2.3.1. <i>The ‘Colored Glass’ action</i>	13

1. THE BASICS

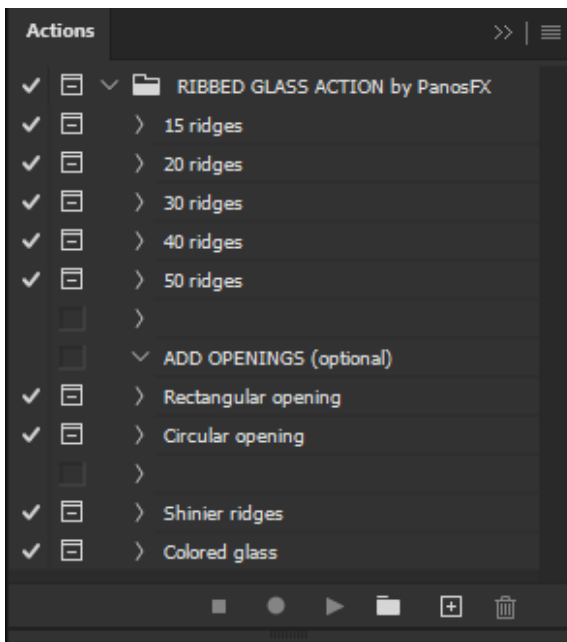
1.1. About the effects

Ribbed glass is a type of glassware that has ridges (or ribs) running along its surface. These ribs scatter light in interesting ways, creating beautiful patterns of light and shadow.

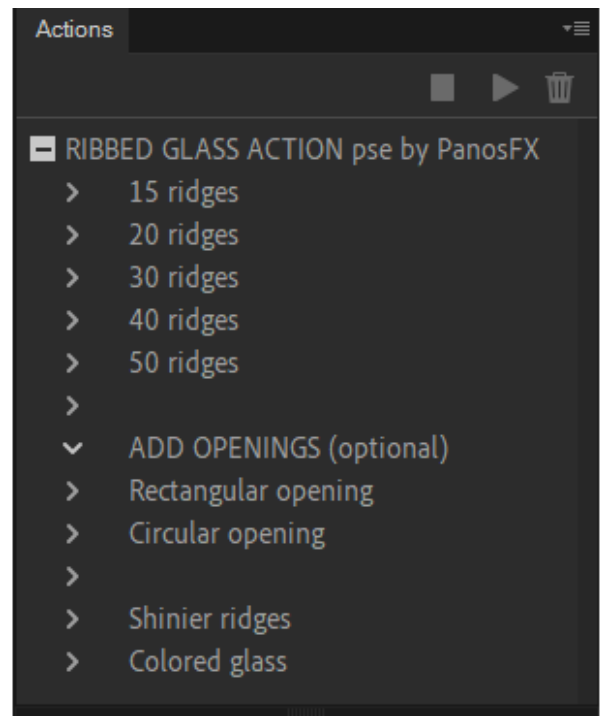
The PanosFX “Ribbed Glass” is a set of actions for Adobe Photoshop that creates a unique and captivating effect, simulating the view of your photos through ribbed glass. These ribs can vary in size and depth, giving you control to adjust the effect to your preference. Additionally, the add-on allows you to apply the effect to the entire image or to a custom area.

1.2. How the actions are organized

The actions are contained in the “RIBBED GLASS ACTION by PanosFX” set.



The Actions Panel in Adobe Photoshop



The Actions Panel in Adobe Photoshop Elements

They are organized into three groups.

- The first group consists of five core actions that generate ribbed glasses with varying numbers of ridges. You'll need to run one of these actions (the actions in the second and in the third group are optional).
- The actions in the second group offer an intriguing variation: they enable you to 'cut' areas of rectangular or circular shape through the glass, revealing the original image beneath.
- The last two actions let you enhance the effect by adding a shinier texture to the ridges and by tweaking the color of the glass to your preference.

1.3. Removing an older version (or a trial one)

If you have an older product version installed, I recommend you remove it prior to installing the new files. This article shows you how to do it:

www.panosfx.com/installation-troubleshooting/uninstalling

1.4. Installing the actions in Photoshop

If you don't know how to install and use actions in Photoshop, please refer to this article on PanosFX.com:

www.panosfx.com/installation-troubleshooting/installing-photoshop-actions

1.5. Installing the actions in Photoshop Elements

If you don't know how to install and use actions in Photoshop Elements, please refer to this article on PanosFX.com:

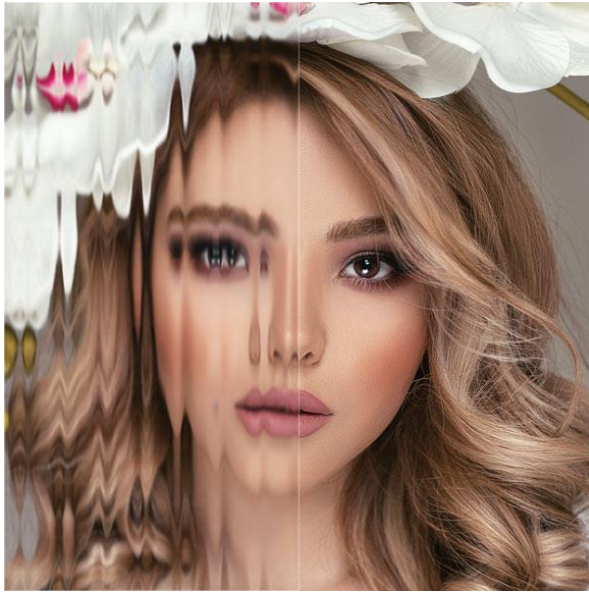
<https://www.panosfx.com/installation-troubleshooting/installing-pse-actions>

2. THE ACTIONS

2.1. Using the 5 core actions

The first group consists of five core actions that generate ribbed glasses with 15, 20, 30, 40 and 50 ridges:

15 ridges:



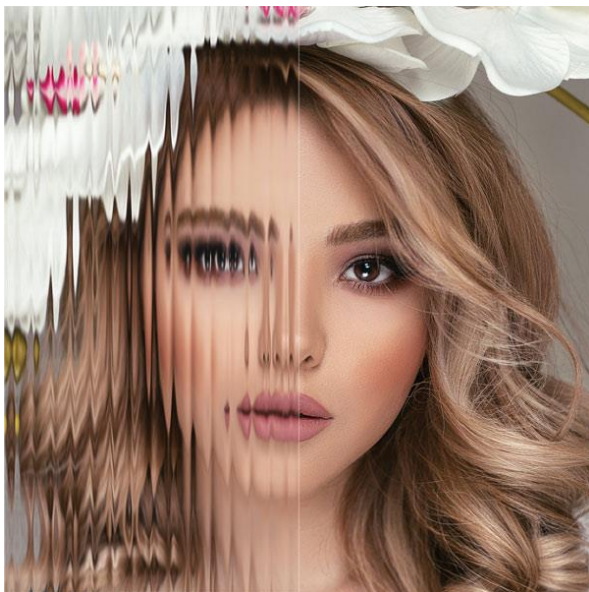
The image's left half was processed using the '15 ridges' action

20 ridges:



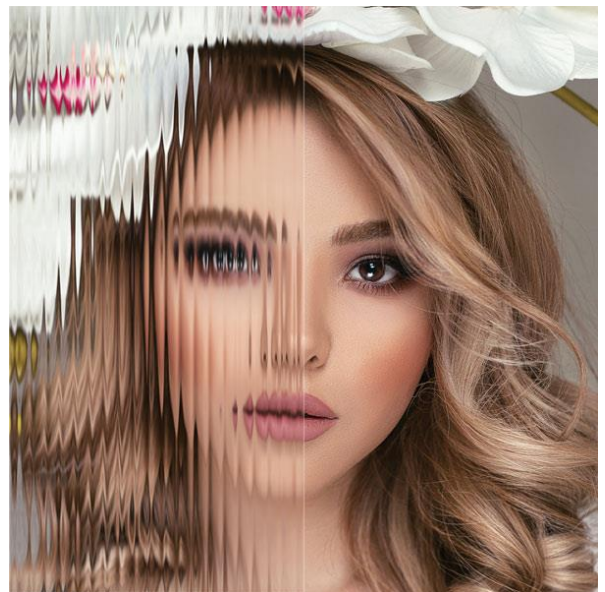
The image's left half was processed using the '20 ridges' action

30 ridges:



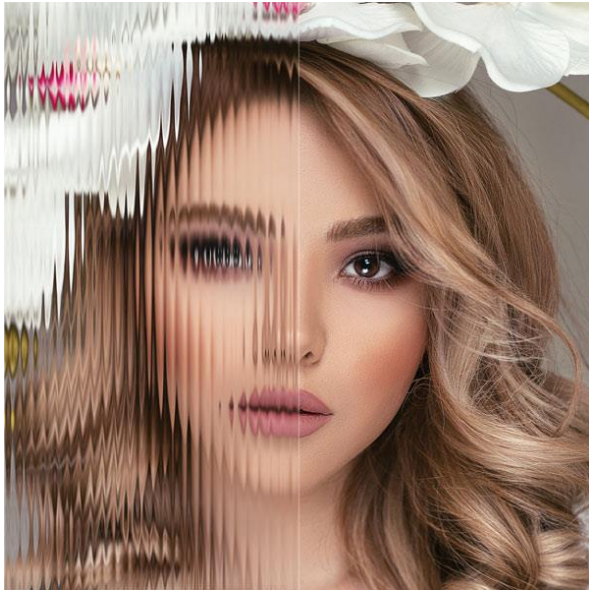
The image's left half was processed using the '30 ridges' action

40 ridges:



The left half of the image was processed with the "40 ridges" action

50 ridges:



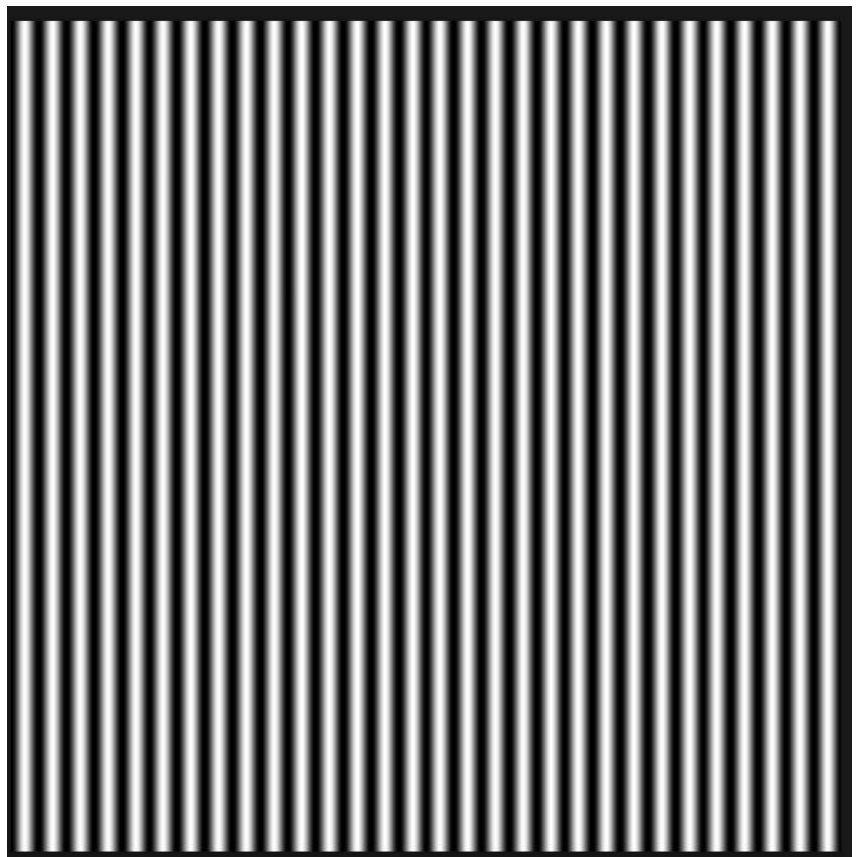
The left half of the image was processed with the "50 ridges" action

Before running any of these five actions, please open a photo in Photoshop. It can be of any size and aspect ratio. Then, select one of the five core actions and click the 'Play' button at the bottom of the Actions Panel to execute it.

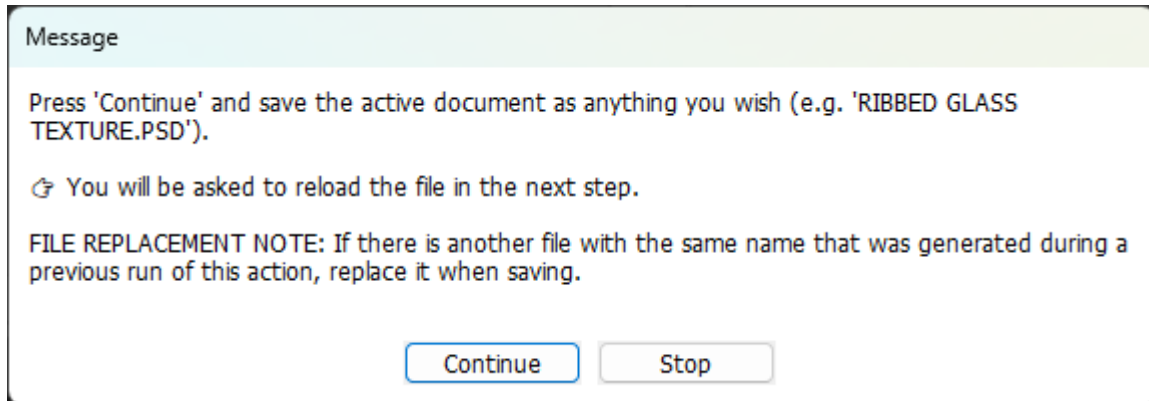
The action generates a new document on your screen resembling the screenshot on the right.

This document serves as the Texture file, which will be utilized to produce the ridges.

You'll save it onto your hard disk and reload it in the subsequent two steps.



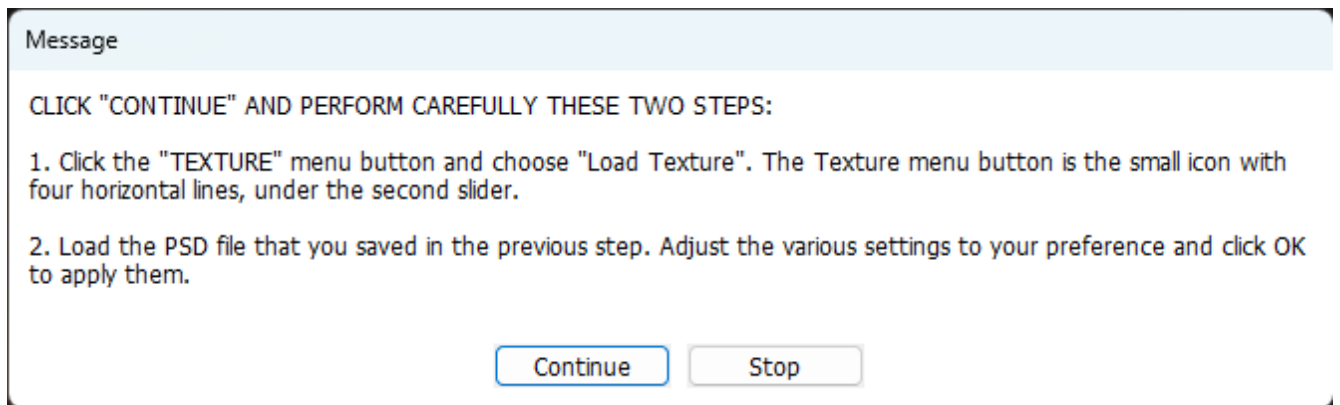
The following message is displayed on your screen:



Read the instructions, click 'Continue' and **save** the active document to your desktop.

You can use any filename, but I recommend using the **same** name each time you run any of the core actions and replacing the old document while saving. This helps avoid creating multiple texture documents on your desktop.

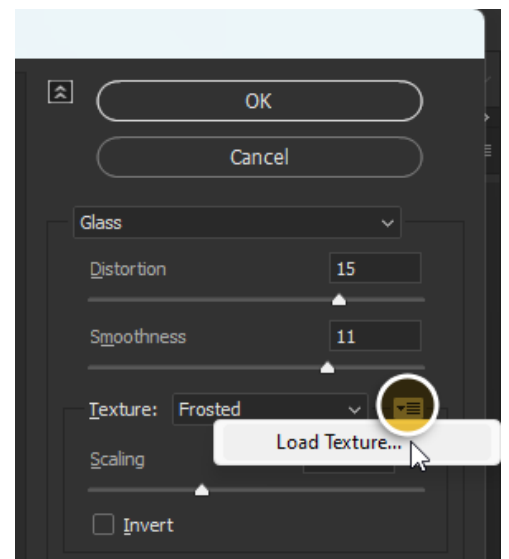
Upon saving the document, the following message will be displayed on your screen:



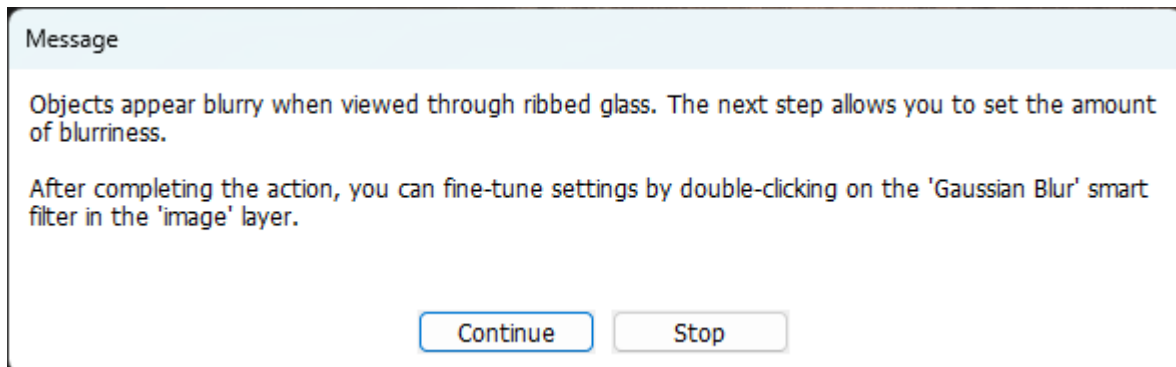
Read the instructions and click “Continue”.

The “**Filter Gallery**” window shows up, displaying the “Glass” filter settings.

Click the **small button** (resembling a little down arrow with 4 horizontal lines) **on the right** of the “Texture” selector and select “**Load Texture**”:



Load the Texture file that you previously saved in your desktop, and click “OK” to apply the “Glass” filter settings. Upon doing so, the following message will be displayed:

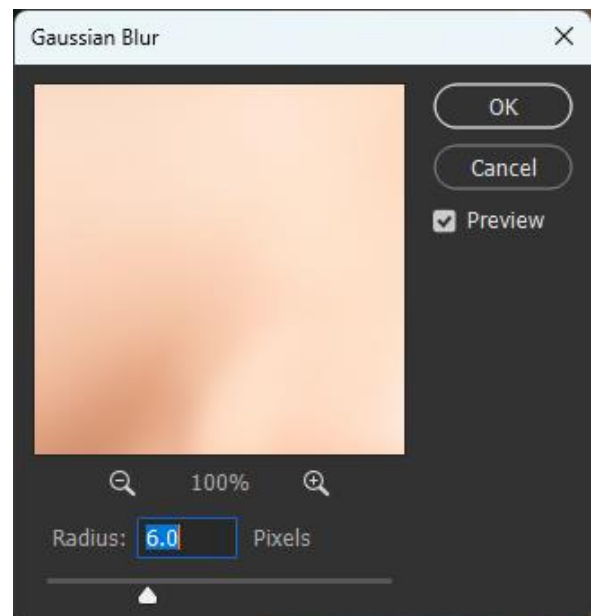


This step involves blurring the image behind the glass, enhancing the realism of the effect. Click “Continue”.

The “**Gaussian Blur**” dialogue box is displayed. Adjust the filter settings to your liking (default = 6.0) and click “OK” to confirm.

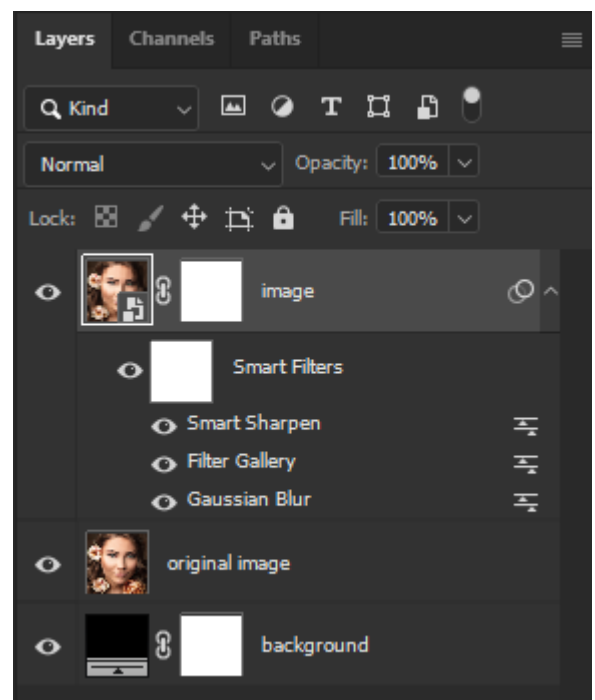
The action will apply the “Smart Sharpen” filter to enhance the image and will be completed.

Note: in the *Photoshop Elements* version of the actions, the “Gaussian Blur” step is performed before the “Filter Gallery” step.



In Adobe Photoshop the filters are stored as **smart filters**, allowing you to re-adjust their settings when the action is completed (not applicable in Photoshop Elements).

To re-adjust the filter settings, go to the Layers panel and double click any of the “Smart Sharpen”, “Filter Gallery” and “Gaussian Blur” filters:



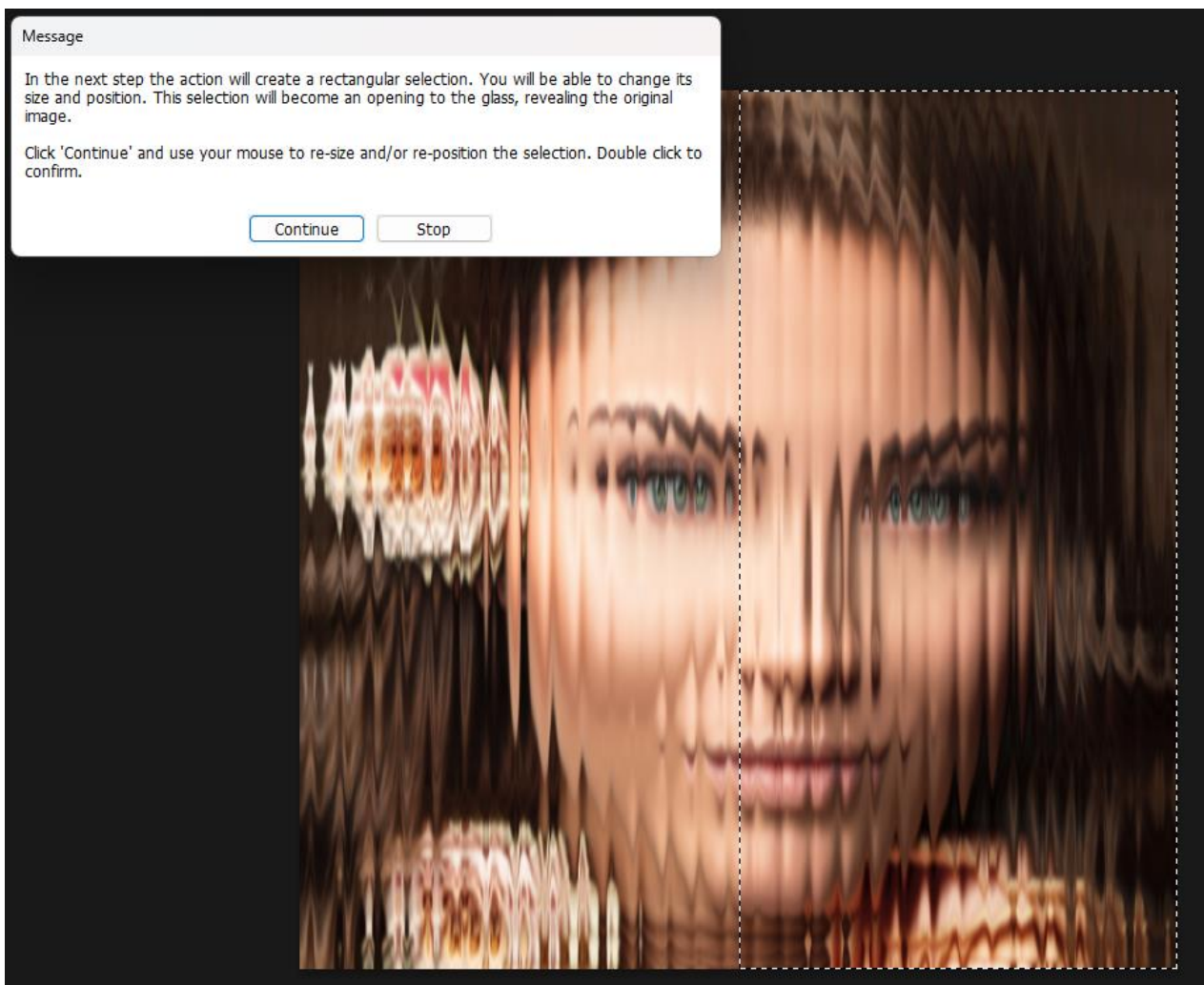
2.2. The 'Rectangular opening' and 'Circular opening' actions

The two actions in the “ADD OPENINGS (optional)” group let you reveal a part of the original image, making the effect even more interesting.

2.2.1. The 'Rectangular opening' action

The 'Rectangular opening' action allows you to specify a rectangular area that will be converted into a window opening, revealing the original image beneath.

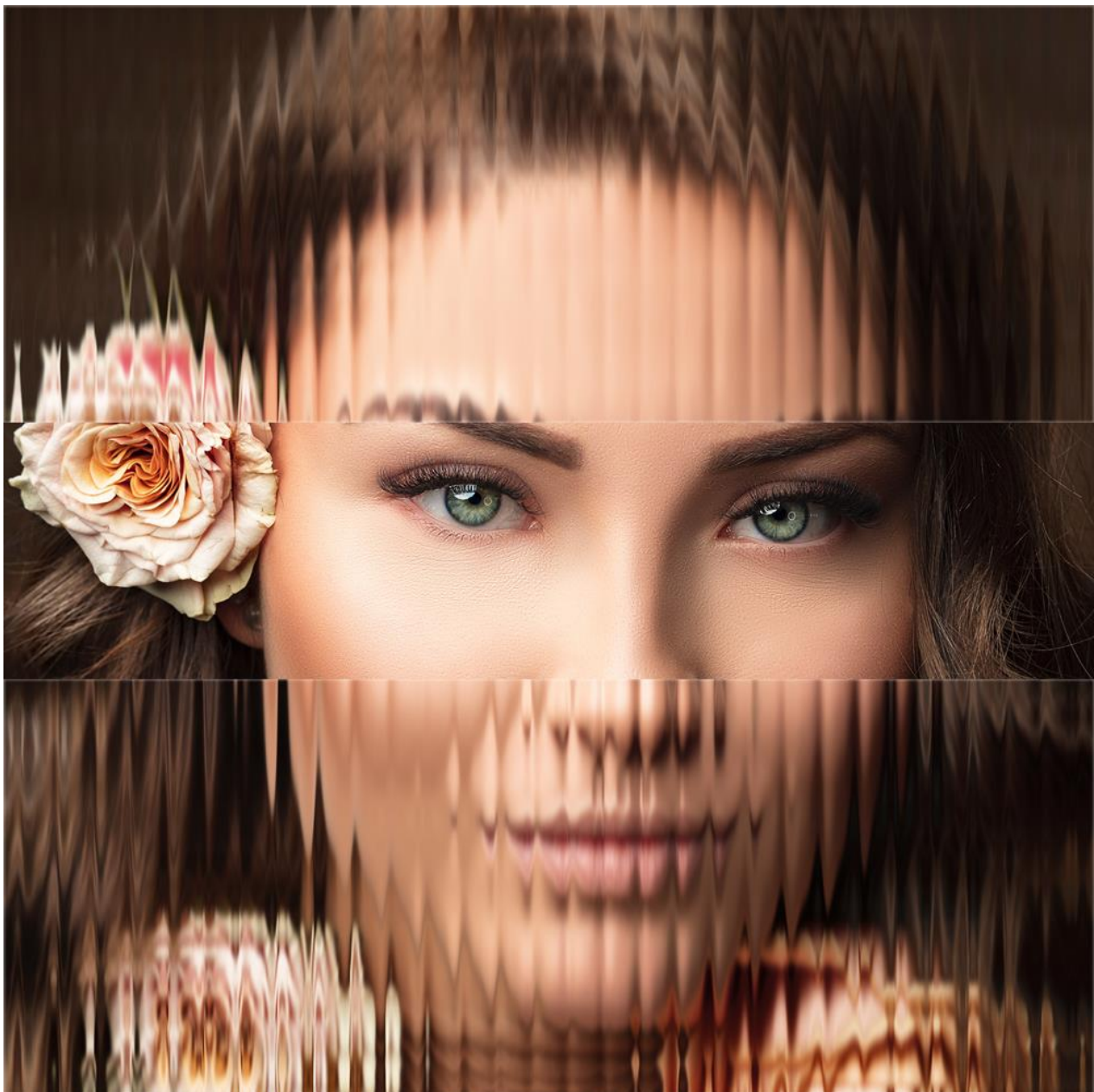
The action begins with creating a selection of the right half part of the image. This selection will become the glass opening:



When you click “Continue”, you’ll be able to use the transformation handles to resize and reposition the selection to your preference:



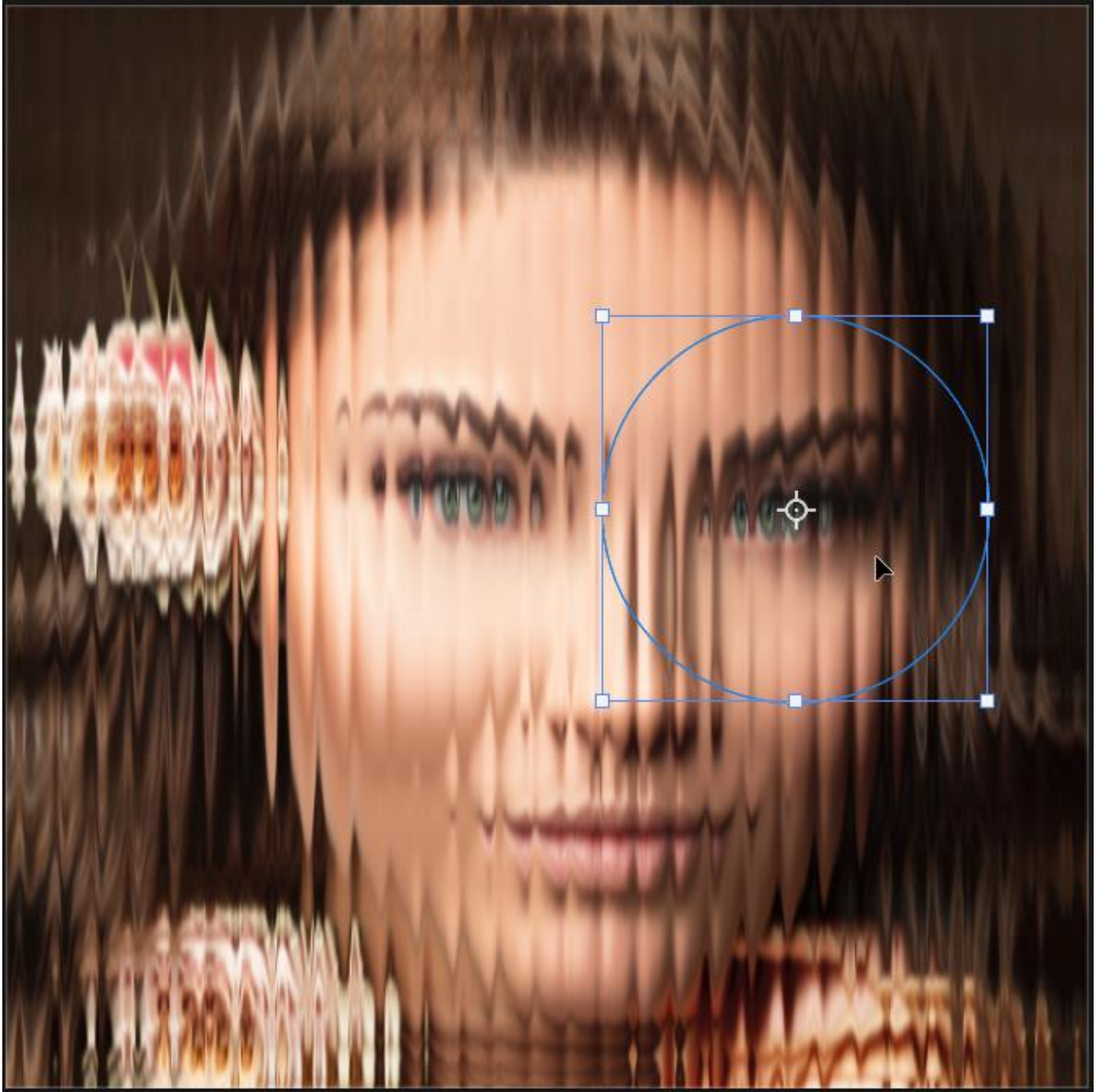
When you finish, double click to confirm and create the opening:



2.2.1. The 'Circular opening' action

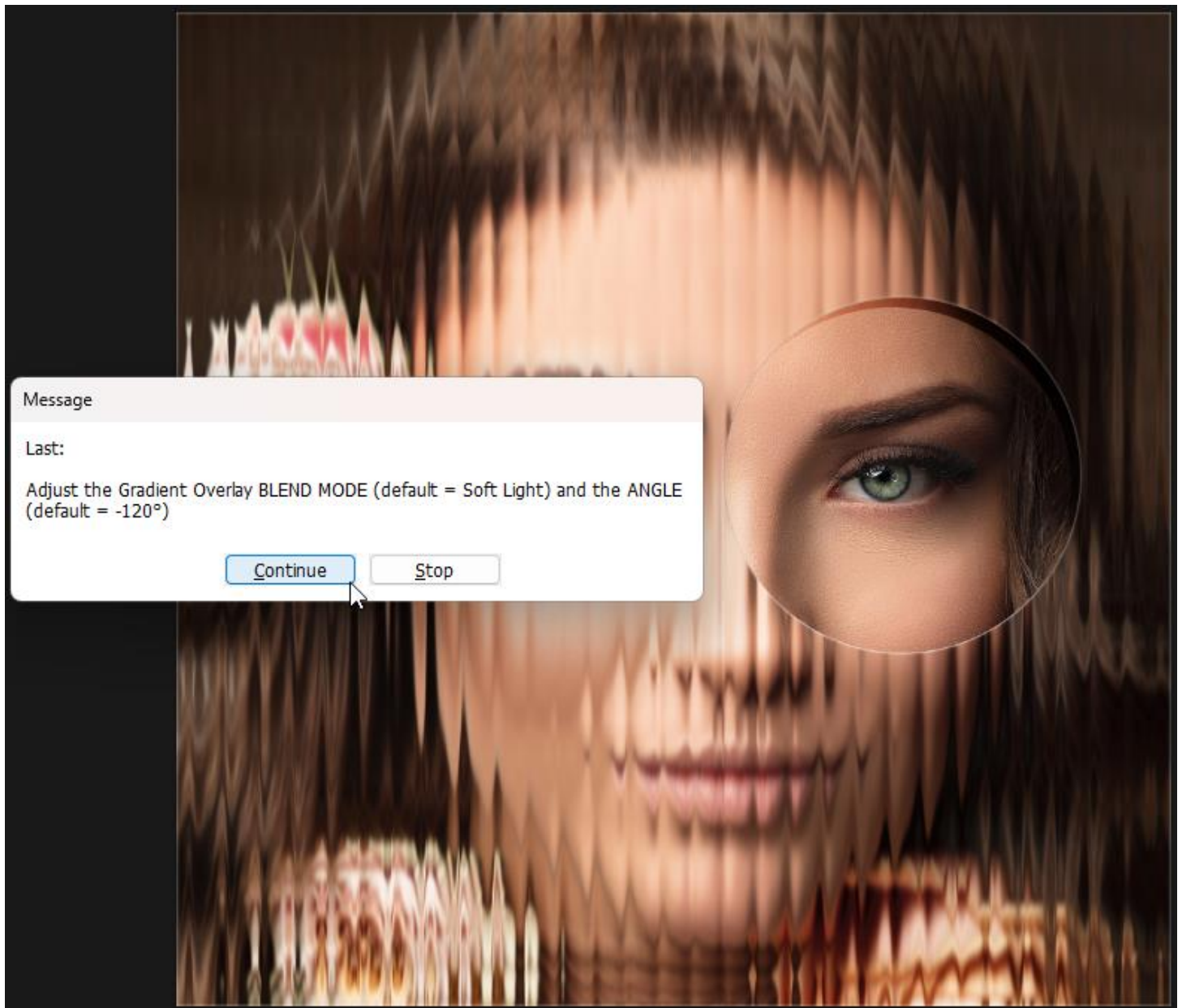
The 'Circular opening' action allows you to specify a circular area that will be converted into a window opening, revealing the original image beneath.

The action begins with creating a circular vector shape. Use your mouse to resize and re-position the shape that will become the circular opening:



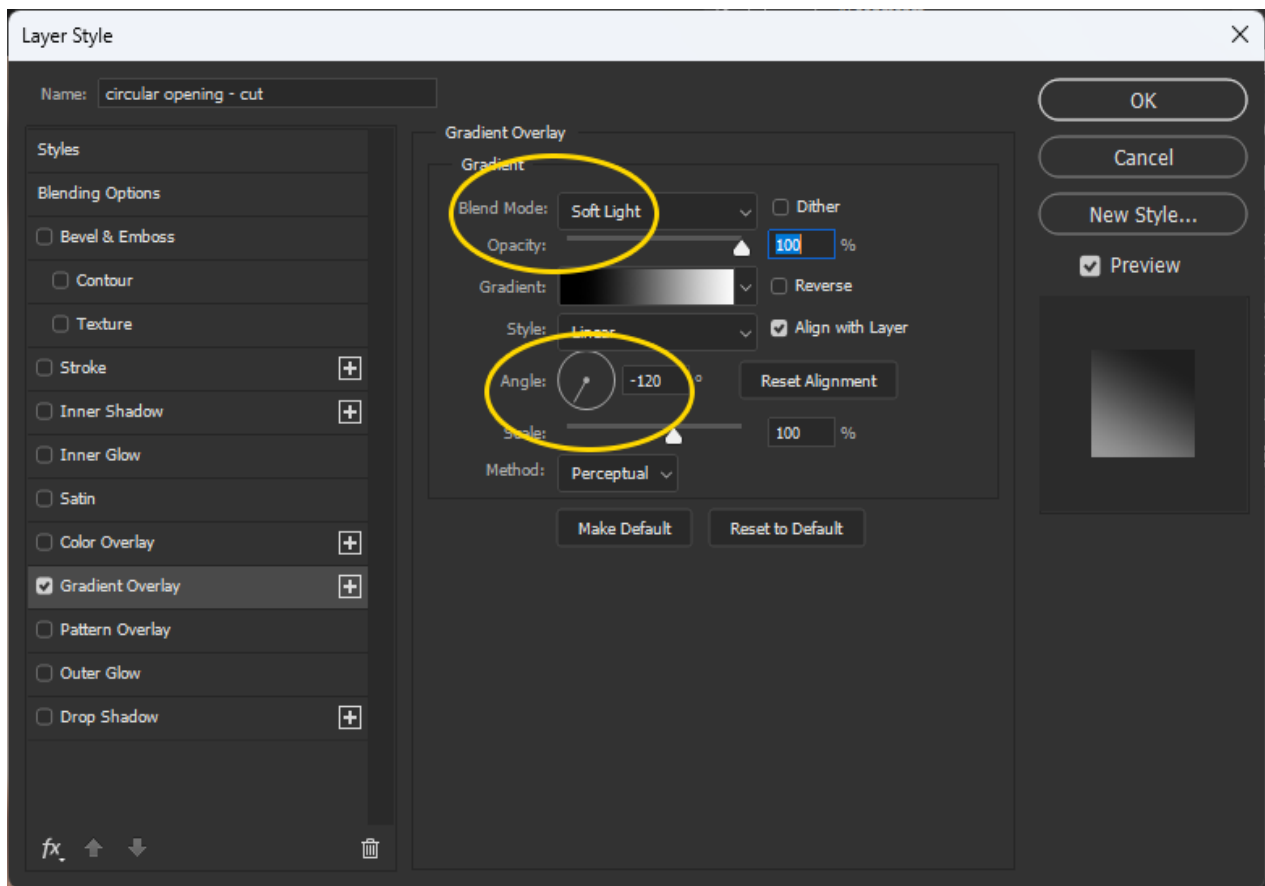
Double click to confirm.

The next step lets you make some modifications:



Click Continue.

The Layer Styles window shows up. Modify the Gradient Overlay **Blending Mode** and its **Angle** to your preference:

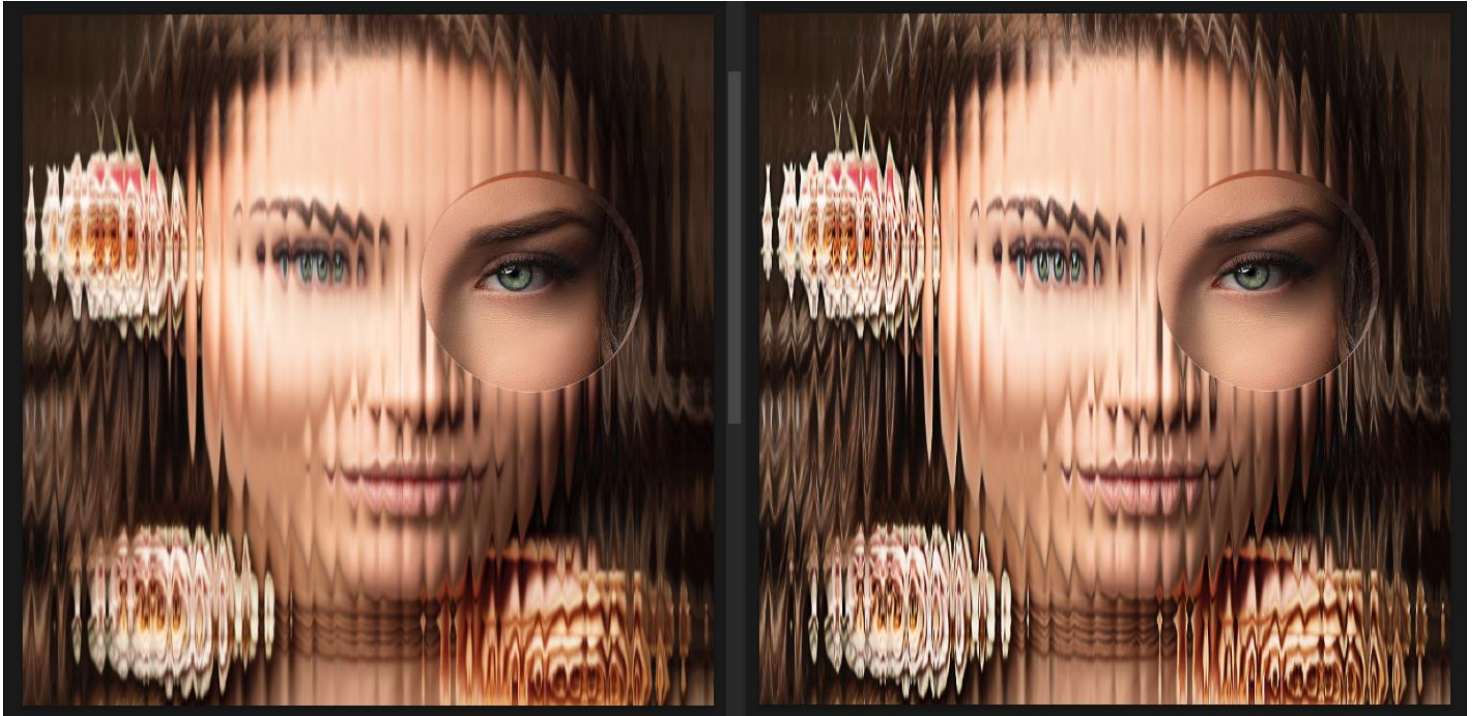


Click **OK** to apply your settings.

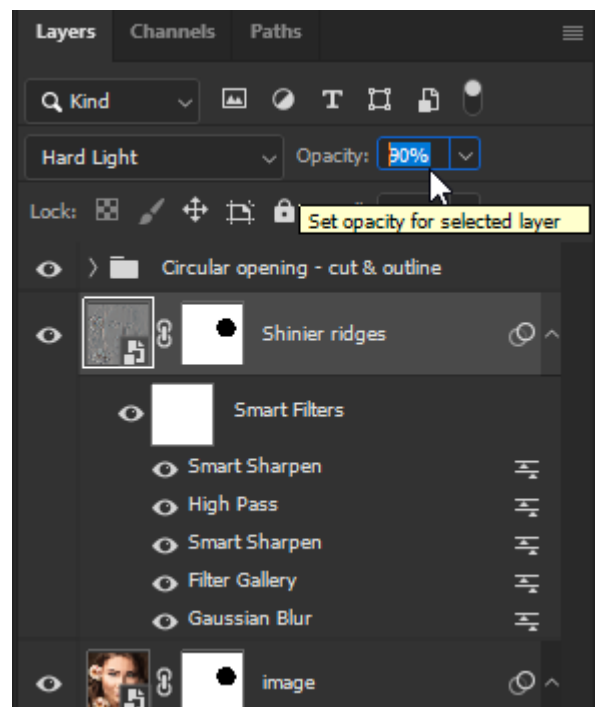
2.3. The 'Shinier ridges' and 'Colored glass' actions

2.3.1. The 'Shinier ridges' action

This action will emphasize the glass ridges' texture, making them look shinier.

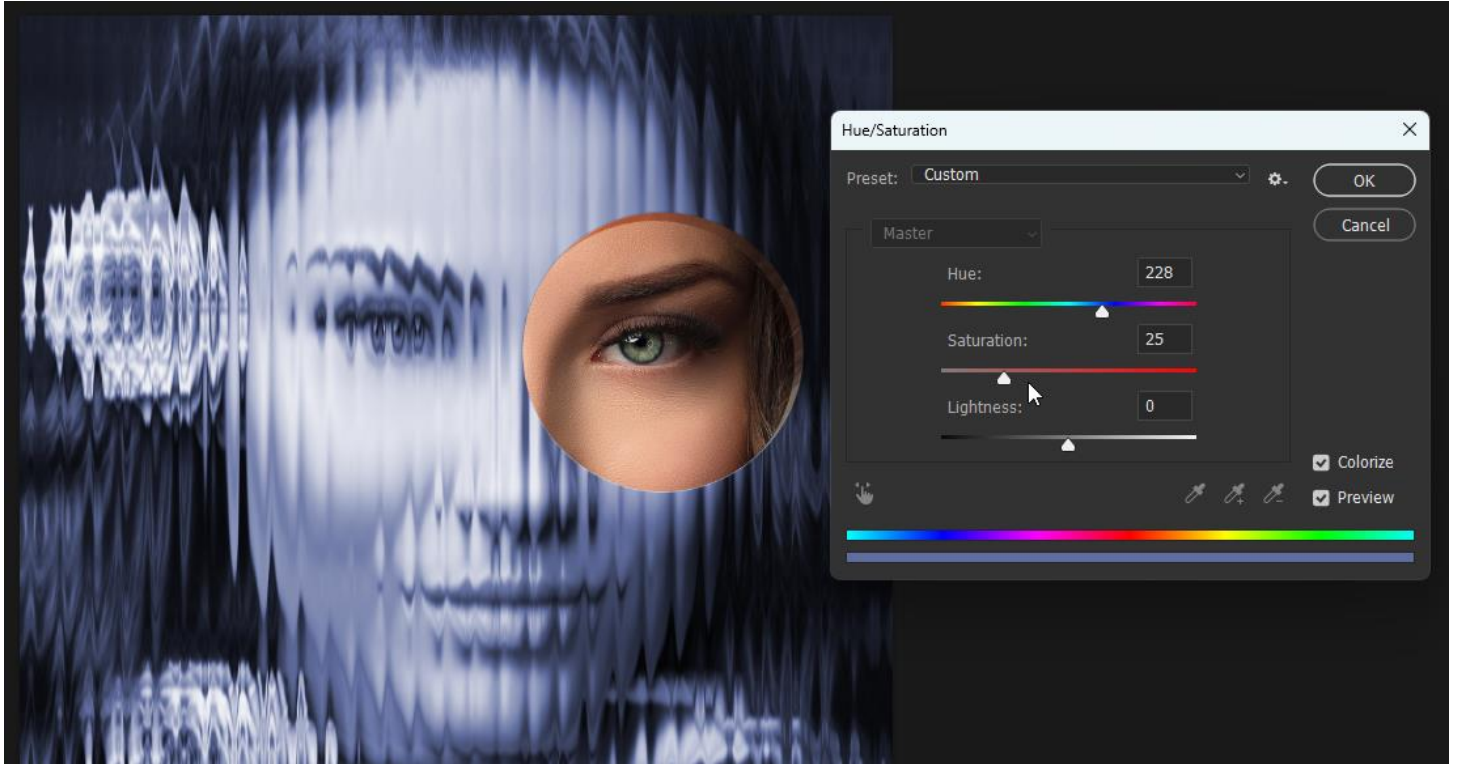


After the 'Shinier ridges' action is completed, you can adjust the intensity of the effect by modifying the opacity of the "Shinier ridges" layer.

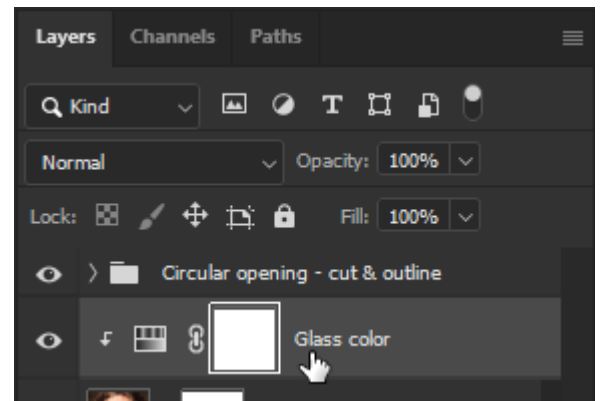


2.3.1. The ‘Colored Glass’ action

The last action of the set lets you add color to the transparent glass. Move the “Hue” and “Saturation” sliders to your preference.



When the action is completed, a layer named "Glass color" will be added to the Layers panel. You can double-click its thumbnail to re-adjust the glass color. Additionally, you can experiment with changing the layer's opacity and blending mode.



If you have any questions, please feel free to contact me using the contact form on my website. Alternatively, you can email me at info@panosfx.com providing details of your Photoshop version and operating system along with your inquiry.

Panos Efstathiadis

www.PanosFX.com